

**PASMINCO COCKLE CREEK SMELTER PTY LTD (PCCS) – POLLUTION INCIDENT RESPONSE
MANAGEMENT PLAN**

Person responsible for:

- activating this Management Plan
- notifying, immediately after becoming aware of a pollution incident:
 - Environment Protection Authority – Pollution Line
 - Lake Macquarie City Council
 - Ministry of Health
 - SafeWork NSW
 - Fire and Rescue NSW
 - Department of Planning
- managing PCCS's response to any pollution incident

Site Manager: Wayne Woodward

Contact Details: Mob 0403278575

Details of contact details of external regulatory bodies are documented in a separate Sheet – Contact Details Sheet.

Training	Training in this Management Plan will be provided to PCCS Staff
	Training in pollution incident emergency response for site personnel will occur as required
	Details of training must be recorded in the site Training Program Register
Testing and Review	This Management Plan will be tested by assessment and reviewed annually as a minimum, or within one month from when an actual pollution incident commenced (e.g. scenarios, and or discussion/review forums) and updated where required. Details of review and changes are maintained on site. The date of the last review and authoriser are contained in the footer of this document.

Activity		
Description of the hazards to human health or the environment	Likelihood of hazard occurring including any conditions or events that could increase the likelihood of occurrence	Pre-emptive action to be taken to minimise or prevent risk of harm
Discharge of contaminated water/stormwater from surface facilities	May occur during periods of high rainfall	<ul style="list-style-type: none"> ▪ Stored (untreated) water to be processed through the Effluent Treatment Plant and discharged off-site through licensed discharge points ▪ On-site dams to be managed to maximise storage capacity and minimise the risk of overflow ▪ Regular meetings to discuss water management activities at the site ▪ Site supervisor's approval required for the draining of any accumulated water

Potential Pollutants		
Inventory of Potential pollutants on premises	Maximum Quantity of any pollutant stored on premises	Description of safety equipment or other devices used to minimise risks
Hydrated Lime	3 tonnes	Bagged and stored in water treatment plant building.
Envirofloc 3001	5,000 litres	Bund around tank in water treatment plant building.
Calcium Hydroxide	5,000 litres	Bund around tank in water treatment plant building.
Hybind 2007	5,000 litres	Bund around tank in water treatment plant building.

Pollution Incident

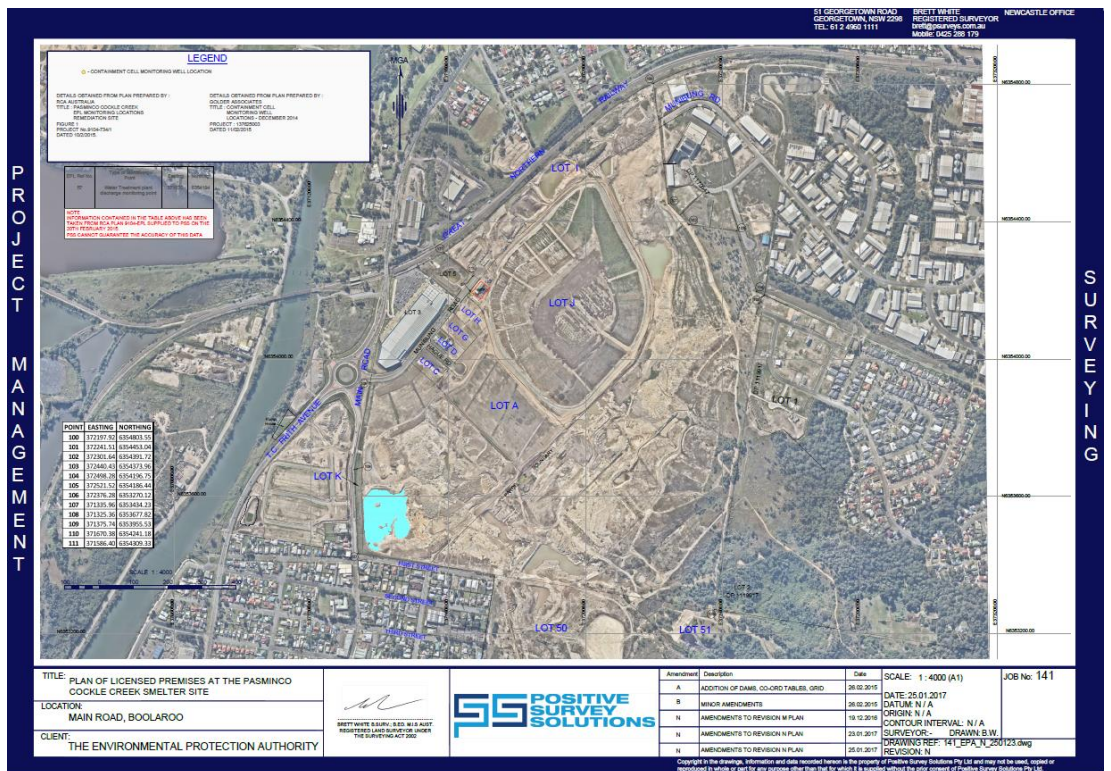
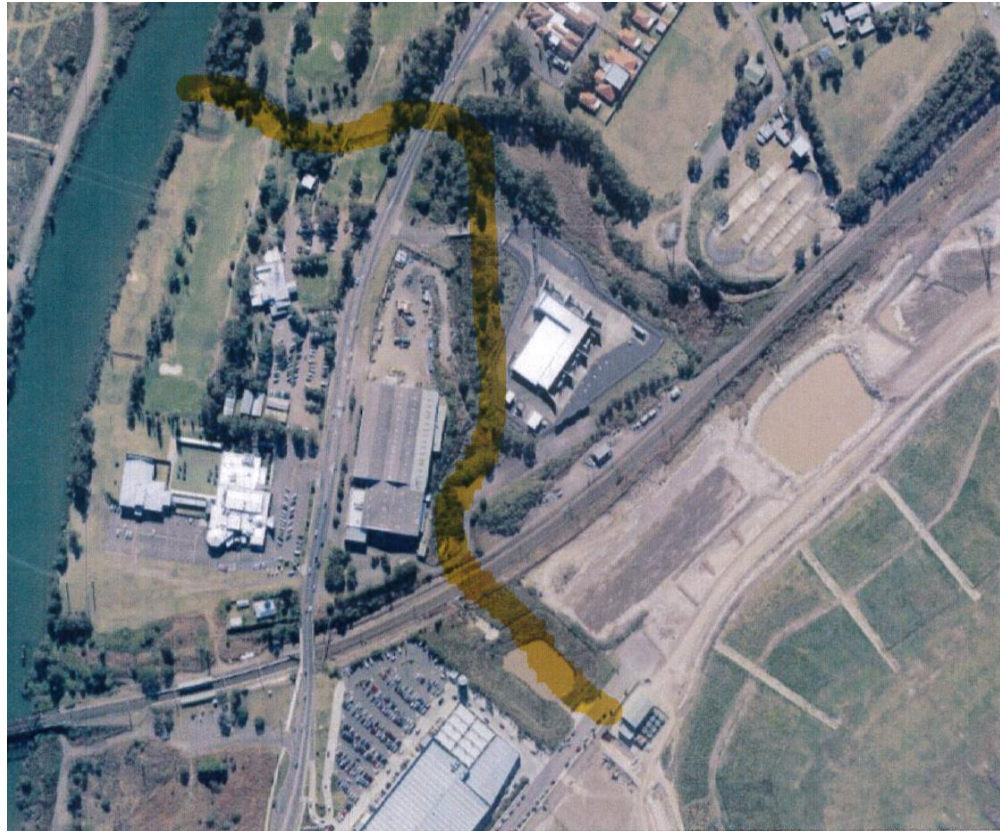
Description of the type of pollution incident	Action to be taken, immediately after pollution incident, to reduce or control any pollution	Procedures to be followed for co-ordinating, with the authorities or persons that have been notified, any action taken in combating the pollution caused by the incident and the persons through whom all communications are to be made
Discharge of contaminated water/stormwater from surface facilities	<ul style="list-style-type: none"> ▪ Identify or confirm nature of discharge, its source, and any risks to people and property ▪ Immediately attempt to cease any discharges from on-site dams to prevent any further downstream contamination ▪ If practicable, isolate the source of the discharge or begin pumping to other available storage location ▪ Assess weather conditions and any further potential for rainfall ▪ Ensure that any required clean-up activities are ongoing until discharge has been controlled 	

Contact details of each relevant authority referred to in section 148 of the Act	
EPA – Pollution Line	131 555
Lake Macquarie City Council	02 4921 0333
Ministry of Health	1300 066 055 (for local public health unit)
Safework NSW	13 10 50
Fire and Rescue NSW	1300 729 579 (or 000 if the situation warrants a response from emergency services)
Department of Planning	compliance@planning.nsw.gov.au

Early Warnings and Minimising Harm on Premises

Mechanisms for providing early warnings and regular updates to the owners and occupiers of premises in the vicinity of the premises	Phone
Arrangements for minimising the risk of harm to any persons on premises	Stormwater flows to stormwater culverts or overland flow paths designed to discharge water.

Detailed map showing the location of the premises, the surrounding area that is likely to be affected by a pollution incident, the location of potential pollutants and location of any stormwater drains



Description of how any risk of harm to human health will be reduced (including early warnings, updates and action to be taken during or immediately after pollution incident)	Dam storage optimised prior to heavy rain events. Relevant authorities notified in the event of a stormwater overflow.
--------------------------------------------------------------------------------------------------------------------------------------------------------------------------------------	---------------------------------------------------------------------------------------------------------------------------

Testing of the Management Plan

Nature and objectives of any staff training program	Desk top training of management associated with notification and risk minimisation.
Dates on which the plan has been tested and name of the person who carried out the test	20/1/2019 Wayne Woodward
Dates on which the plan is updated	Six monthly review
Manner in which the plan is to be tested and maintained	Desk top surveillance audit.